



Annual Report

SALISBURY UNIVERSITY › 2021-2022

Salisbury
UNIVERSITY

Make Tomorrow Yours



Fulbright
Nation's Top Producers
of Fulbright Students
and Scholars

Forbes
Top Colleges,
Best Value Colleges

Washington Monthly
Best Bang
for the Buck Colleges

Money
America's Best Colleges

Kiplinger Personal Finance
Best Public College Values



TABLE OF CONTENTS

- LETTER FROM THE PRESIDENT 5
- OUR SUCCESSES 6
- FULTON SCHOOL OF LIBERAL ARTS12
- HENSON SCHOOL OF SCIENCE & TECHNOLOGY14
- PERDUE SCHOOL OF BUSINESS.16
- SEIDEL SCHOOL OF EDUCATION18
- COLLEGE OF HEALTH & HUMAN SERVICES. 20
- CLARKE HONORS COLLEGE 22
- GRADUATE STUDIES & RESEARCH 24
- INTERNATIONAL EDUCATION 26
- SU FOUNDATION 28
- ALUMNI 30
- ATHLETICS 32
- FINANCIAL REPORT 36

U.S. News & World Report
Best Regional Universities
 in the North

Ranked among
Top Public Schools at No. 14

The Princeton Review
Best 388 Colleges

Top 15% of nation’s four-year colleges
 SU’s Guerrieri Academic Commons among
Top 25 Best College Libraries



LETTER FROM THE PRESIDENT

Dear Sea Gulls,

I am so grateful to you all for welcoming me as your new President of Salisbury University. As I am quickly learning, SU is a friendly and inviting community. I am so appreciative of the warmth and support I have received in my short time here.

It is a pleasure for me to be able to share with you the 2021-2022 Annual Report for Salisbury University and



to celebrate SU's many great achievements during that time. SU is a special place, and what this University has accomplished over the last year is a terrific testament to the success and spirit of those on this campus. I am eager to continue this work and build on our reputation as a student-centered, regional, comprehensive institution.

This annual report is reflective of the significant impact our campus community made on the lives of many individuals, groups and organizations. The inspiring stories of success throughout this report highlight the impressive accomplishments of our students, faculty, staff and alumni.

I have been incredibly proud to learn about the many ways our students, faculty and staff have lived the core values of Salisbury University throughout the past year. This fall, we welcomed our second largest class and most racially diverse class ever, which has filled me with great hope and anticipation for sharing news of their successes and triumphs in next year's annual report.

There is much to be grateful for – and much to look forward to as well. I am deeply appreciative to all who propel this remarkable University forward and know SU will continue to lead, serve and thrive in the years to come.

Sincerely,

A handwritten signature in black ink that reads "Carolyn R. Lepre". The signature is written in a cursive, flowing style.

Dr. Carolyn R. Lepre
President, Salisbury University

Make
Tomorrow
Yours

Salisbury
UNIVERSITY

Make
Tomorrow
Yours

Salisbury
UNIVERSITY

Make
Tomorrow
Yours

Salisbury
UNIVERSITY

Salisbury
UNIVERSITY

Make
Tomorrow
Yours



OUR SUCCESSES

Dr. Carolyn Ringer Lepre Appointed SU's 10th President

The University System of Maryland (USM) Board of Regents appointed Dr. Carolyn "Lyn" Ringer Lepre as the next president of Salisbury University in May 2022. Dr. Lepre joined SU from Radford University (Radford, VA) where she served as the interim president and was previously provost and

vice president for academic affairs. A proven administrator, full professor and respected scholar, she also had a highly successful tenure at Marist College (Poughkeepsie, NY) and served on faculty at the University of Tennessee, Knoxville, and California State University, Chico. Dr. Lepre's tenure as SU's President began on July 15, 2022, following the retirement of President Charles Wight.



Center for Equity, Justice and Inclusion Named In Honor of President Wight

When SU President Charles Wight dedicated the Center for Equity, Justice and Inclusion in 2018, he did so with the hope of building upon the campus' culture of diversity and inclusion. In recognition of his dedication to those ideals, SU's executive leadership renamed the facility the Charles A. Wight Multicultural Center for Equity, Justice and Inclusion.

Dr. Wight was surprised with the tribute in June, just weeks prior to his planned retirement from the presidency. He also

was honored with the Spirit of Salisbury Award, presented to select individuals who have made continuous and notable contributions to the University's mission, quality and character.

The Wight Center for Equity, Justice and Inclusion is located in Blackwell Hall and provides support, education and engagement for under-resourced identities, benefiting students, faculty and staff.



USM Board of Regents' Awards for Excellence

The University System of Maryland (USM) Board of Regents recognized two staff members in 2022 with one of its highest honors. Donna Carey, executive administrative assistant in the Fulton School of Liberal Arts Dean's Office was recognized in the Exceptional Contribution to the Institution category and Haley Cristea, instructional designer in the Instructional Design and Delivery Office, was honored in the Effectiveness and Efficiency category. Carey and Cristea were two of the seven recipients of the Board of Regents' Staff Award in 2022.

SU's latest award winners join a long list of faculty and staff honored by the Board of Regents for their achievements, including

the prior year recipients Dr. Celine Carayon, Dr. Ani Mathers, Dr. Kristen Walton and Crystal Kelly. Carayon earned the faculty award for Scholarship, Research or Creative Activity; Mathers and Walton earned the faculty award for Excellence in Mentoring; and Kelly earned the staff award for Effectiveness and Efficiency.

Sea Gull Pell Promise Program Announced

SU is making it easier for first-year students who qualify for a federal Pell Grant to attend, launching a new program offering free tuition for four years. Through the new Sea Gull Pell Promise, SU covers any tuition costs remaining once eligible students' scholarships, grants and benefits are applied. To



qualify, prospective students must apply for admission directly out of high school with a minimum 3.75 high school grade point average and qualify for a Pell Grant by submitting the Free Application for Federal Student Aid (FAFSA). Funding is renewable up to four years (eight semesters total) for recipients who maintain eligibility.

New Brand Launched: Make Tomorrow Yours

In fall 2021, after a year-long effort led by a steering committee with input from numerous constituencies both on and off campus, SU introduced its new brand initiative: “Make Tomorrow Yours.” At its launch, SU President Charles Wight shared: “We

have accurately captured the long-standing commitment of our institution to providing students with rich and plentiful opportunities, as well as the dedication of our faculty and staff who change the trajectory of our students’ lives and open doors for graduates to thrive. Yes, we are tomorrow makers.”

70 students have been winners of **PRESTIGIOUS NATIONALLY COMPETITIVE FELLOWSHIPS** in the past five years



Record Nine from SU Named 2022-23 Fulbright Students

A record nine SU students and alumni have earned the prestigious U.S. Fulbright Student Award for the 2022-23 academic year. This is Salisbury's best year ever for the Fulbright Student Award, with a nearly 50% acceptance rate from original applicants. The Fulbright is the country's flagship international exchange program.

SU's 2022-2023 Fulbright Students are Kimberly Arriaga-Gonzalez, Abigail Boltz, Christian Ciattei, Aida Dadoo,

N'Tumahawa Kamara, Morgan McGlone-Smith, Nathaniel Sansom, Melanie Staszewsk, and Kylie Webb.

SU was named among the nation's top producers of Fulbright Students for 2021-2022 by the U.S. Department of State's Bureau of Educational and Cultural Affairs for the fifth year in a row. SU also has been named among the nation's leading producers of Fulbright Scholars and was one of only five institutions to make both lists.

SU's 2021-2022 Fulbright Students were Abiodun Adeoye, Jessica Pierce, Julia Rohrer and Kathryn Stout.



Laconich Named USM Langenberg Legacy Fellow

SU senior Dylan Laconich was selected among the inaugural class of Langenberg Legacy Fellows. The fellowship aims to foster civic education and civic engagement on and off campus.

Laconich, an urban and regional planning major from Arnold, MD, has long had a passion for civic engagement and giving back to the community in which he lives, in particular pertaining to the environment. He has been a member of the Environmental Student Association (ESA) and is a key player in the ESA's bee project.

For his Langenberg proposal, with guidance from Dr. Amal Ali of the Urban and Regional Planning Program, he chose to carry on with the environmental basis of the ESA projects, reaching out to a broader audience on the Eastern Shore. Laconich will be working with SU's Institute for Public Affairs and Civic Engagement (PACE) and the City of Salisbury's Community Relations Department and Green Team.

70+ AWARDS TOTALING \$6.3+M in funds for research and public service projects



FULTON SCHOOL OF LIBERAL ARTS

Kim Paints Official Portrait of Maryland First Lady Yumi Hogan

SU Professor of Art Jinchul Kim knew Yumi Hogan well before she became the First Lady of Maryland. The two artists traveled in the same circles, including the Han-Mee Artists Association of Greater Washington for Korean American artists, and have displayed their work together.

When Hogan chose Kim for her official portrait it meant more to him than some of his other works, as it gave him the opportunity to capture a friend on canvas. The First Lady visited Kim's studio on several occasions throughout the process, which was completed early in 2021. She has said that when she comes to the Eastern Shore, the geography and agriculture of the chicken farms and corn fields remind her of the town in which she grew up in Korea.

The portrait of Hogan and that of her husband, Governor Larry Hogan (painted by artist Cedric Ege), were unveiled at the Government House in Annapolis. The Foundation for the Preservation of Government House of Maryland, Inc. commissioned the official portrait, which is part of the state's art collection.

REACH Ethics Initiative Earns \$146,000 NEH Grant

The Re-Envisioning Ethics Access and Community Humanities (REACH) program at SU received a \$146,322 grant from the National Endowment for the Humanities (NEH) Humanities Connections program. The funding will help the initiative, a collaboration involving Philosophy, Psychology and Biological Sciences departments, to bring aspects of ethical practice into all disciplines across campus. The grant will support three years' worth of programming around community-based ethics education.

Drs. Michèle Schlehofer (Psychology), Timothy Stock (Philosophy) and Jennifer Nyland (Biological Sciences)

received the grant after several years serving as co-directors of REACH. The initiative began in 2018, when Schlehofer and Stock realized how much overlap there was between their disciplines in terms of the importance of ethical concerns. The pandemic demonstrated how ethics affects nearly all aspects of life and provided a new context for biomedical research to establish ethics and social responsibility as a primary concern.

REACH develops methods to connect community partners with SU and to return campus conversations around ethical issues to the community. The NEH grant aims to blend humanities disciplines – ethics, in SU's case – into different academic settings, in particular the STEM disciplines. Funds will support "Ethics Across the Curriculum," a program that will help train faculty in how ethics can be interwoven in their classes.

Ethics Bowl Team Finishes 12th at National Competition

SU students went toe-to-toe intellectually with the likes of Tufts, Yale and the U.S. Military Academy at West Point in the Association for Practical and Professional Ethics' Intercollegiate Ethics Bowl.

The 2022 season was another successful one for the Ethics Bowl team, as SU's squad advanced to the national championship for the third time in 11 years, posting a record of 2-1-1 and finishing 12th in the standings – the best finish in SU's history. Hundreds of teams competed across regional match-ups, but only 36 teams qualified for the national championship. All eight of the team members were participating on the SU Ethics Bowl team for the first time.

HENSON SCHOOL OF SCIENCE & TECHNOLOGY

Chemistry Department Earns ACS Recertification

SU's Chemistry Department earned recertification from the American Chemical Society (ACS). The reviewers of the six-year periodic report, effective through 2027, described SU as having a "strong chemistry program that meets all current ACS guidelines for professional training." The ACS also highlighted strengths of the department, including a new endowment to support research and travel, a recently replaced Nuclear Magnetic Resonance (NMR) spectrometer and a modernized advanced experimental laboratory.

New instrumentation with the addition of a Sherwood Scientific Evans Magnetic Susceptibility Balance, Schlenk line and associated glassware, vacuum pump, Gamry potentiostat, and prototyping electronics equipment marked highlighted upgrades to the department. With these enhancements and an increase in the number of faculty teaching courses, students can perform more than five new experiments and are benefiting from more expertise across the chemistry disciplines.

Faculty Named to Inaugural NSF All-BOARD Cohort

SU faculty in the Richard A. Henson School of Science and Technology were named to the inaugural cohort of the Alliance-Building Offshore to Achieve Resilience and Diversity (All-ABOARD) program.

Drs. Christina Bradley, Tom Cawthern, Mark Muller and Andrea Presotto will work with peers from Columbia University, Coastal Carolina University, West Virginia University and the University of Southern Florida for the next two years on diversity issues, networking, resilience and leadership development. Teams will take part in a unique in-person retreat that partially will take place on a research ship operated by the U.S. Academic Fleet.

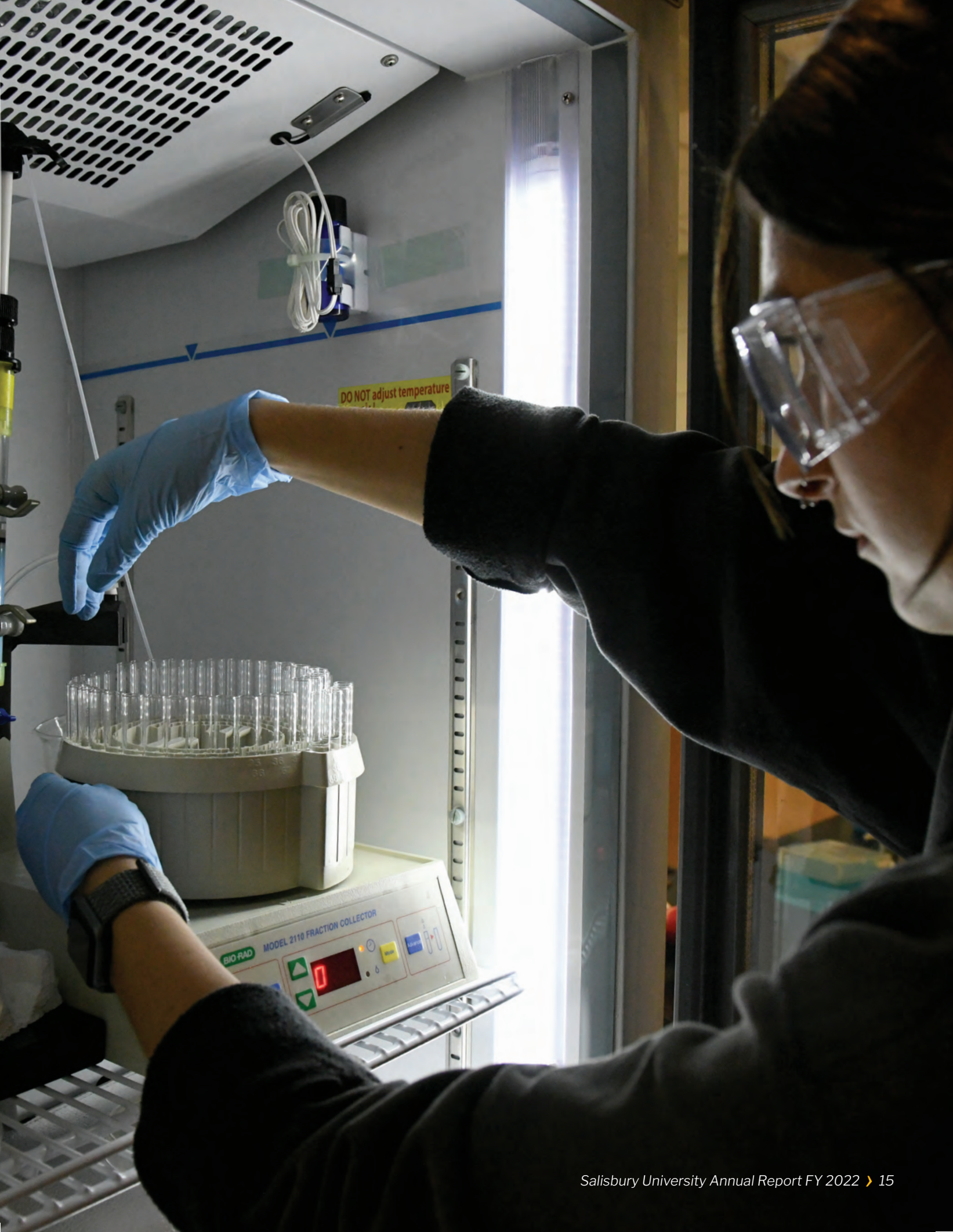
The project is funded through the National Science Foundation's (NSF) Geoscience Opportunities for Leadership in Diversity – Expanding the Network, and is a unique ship-based professional development model that provides rising and established geoscience leaders with the tools they need to advance the goals of diversity, equity and inclusion on their home campuses.

Agencies Partner with ESRGC to Launch Eastern Shore Economic Recovery Project

In spring 2020, local economic and workforce development professionals from the Mid-Shore Regional Council and other organizations teamed with data visualization specialists from SU's Eastern Shore Regional GIS Cooperative (ESRGC) to apply for a \$400,000 grant from the U.S. Economic Development Administration to establish the program. Their mission is to create tools and strategies that will help the region recover from the economic shock of the pandemic.

The project has currently developed easy access to key economic indicators and uses publicly accessible data from resources such as the U.S. Census Bureau, American Community Survey and County Business Patterns. Data visualizations include interactive dashboards, web mapping applications and interactive reports. Much of the data was publicly available but was not in a form that was easy to use in driving actual decisions.

The Eastern Shore Economic Recovery Project ultimately will become part of the Delmarva Index, a tool the ESRGC has developed as a centralized repository that provides streamlined access to data and visualization of information about the Delmarva Peninsula.





PERDUE SCHOOL OF BUSINESS

Rommel Center for Entrepreneurship Opens

In 2017, local philanthropists Dave and Patsy Rommel announced a \$5.5 million gift to publicly launch “We Are SU: The Campaign for Salisbury University,” the largest such initiative in campus history. Some \$500,000 of that gift was earmarked to help the University provide a space for student entrepreneurs in downtown Salisbury.

The center – named for the Rommels – features shared co-working space for SU students and local entrepreneurs, including four studio offices and eight individual “garages” for winners of SU’s Philip E. and Carole R. Ratcliffe Foundation Shore Hatchery competition. Additional features include a “wet lab” geared toward science startups such as agriculture, medical technology and biotechnology, as well as a “makerspace” for robotics, small product assembly and technology-enhanced products with 3-D prototyping, including a textile workshop.

“Since 1987, when SU hosted its first student business plan competition, entrepreneurship has been a pillar of the University’s Franklin P. Perdue School of Business,” said William Burke, SU executive director of entrepreneurship. “This facility marks a new chapter in our commitment to developing student entrepreneurs and innovators into the business owners and employers of tomorrow.”

SU Awards Up To \$300,000 in Entrepreneurship Funding Through Annual Competitions

The Philip E. and Carole R. Ratcliffe Foundation Shore Hatchery program awarded \$200,000 in funding during the 2021-2022 academic year to local and area entrepreneurs. The program, which was established in 2013 with an initial \$1 million contribution and a second \$1 million contribution in 2017, is administered through SU’s Perdue School of Business. The goal of the program is to fund entrepreneurs and have businesses opening within six months, with the potential of employing three or more people within three years.

Up to \$200,000 annually is available for those applying for grants through the Shore Hatchery

program. This round’s winners join the program’s 88 previous award recipients, who have self-reported estimated profits of some \$76,668,454, creating more than 638 jobs.

Additionally, the annual Perdue School of Business Entrepreneurship Competitions for SU students welcomed 23 teams and individual participants to compete for a prize pool of \$100,000. The competition’s top award was given to junior art major Carleigh Stokes to develop an organic surf wax, an adhesive that helps surfers connect their feet with their boards. Stokes was awarded \$19,500 in cash and prizes.

MASMI Hosts Second National Shore Sales Challenge

Some 133 students from 36 colleges and universities in the U.S. and beyond competed in the National Shore Sales Challenge (NSSC), hosted by SU’s Mid-Atlantic Sales and Marketing Institute (MASMI), and presented by Perdue Farms. Students competed in sales role-play and speed-selling challenges, pitching themselves to judges, representing the event’s sponsors and others, on the topic “Why I am the best person for the job.”

The National Shore Sales Challenge is comprised of two main events: A Role-Play Competition where students participate in a 12-minute sales call role play and a Speed-Selling Competition where students create and present a 90-second personal sales pitch. In addition, all competitors who do not advance to Role-Play Round Two take part in the Role-Play Wild-Card Round – a five-minute, cold-calling competition – for another chance to advance to Role-Play Round Two.

SU’s team finished impressively within the top 10 from among a competitive field of talented teams and universities. Placing sixth overall, the SU team has been among the top 10 in both years of the competition.

SEIDEL SCHOOL OF EDUCATION

Center Expands to Become Eastern Shore Child Care Resource Center

SU's Lower Shore Child Care Resource Center has been a valuable ally to child care centers in Wicomico, Somerset and Worcester counties for nearly 20 years. Its footprint – and name – have expanded. After winning a \$274,500 grant from the Maryland Family Network (MFN), the SU-coordinated entity became the Eastern Shore Child Care Resource Center (ESCCRC) and earned the right to coordinate coverage for the entire Eastern Shore after MFN redistricted to make the Shore one district instead of its previous two.

The grant allows the ESCCRC to maintain a robust offering of training opportunities throughout the Eastern Shore. The ESCCRC offers support groups, conference opportunities and professional development in specialty areas presented by professionals from the ESCCRC, SU and the school systems of all eight counties on the Eastern Shore.

“The center has been an invaluable community connection for SU and a benefit to those in child care in the area,” said Dr. Laurie Henry, dean of the Samuel W. and Marilyn C. Seidel School of Education. “The assembling of resources on the Eastern Shore into one entity will only further the outreach efforts and allow the ESCCRC to be a greater asset to those in our area by providing access to high quality child care to the communities and families who need it the most.”

Seidel School Earns National Accreditation and Recognition

SU's Seidel School of Education earned accreditation from the Association for Advancing Quality in Educator Preparation (AAQEP). The AAQEP accreditation period is for seven years, and the process includes internal investigation, peer review and accreditation board evaluation. AAQEP is a membership association and quality assurance agency that provides accreditation services and formative support to all types of educator preparation

providers – like SU. It promotes and recognizes quality educator preparation that strengthens the education profession's ability to serve all students, schools and communities equitably.

Additionally, the Seidel School's Elementary/Intermediate Classroom Program (one of three undergraduate programs in the country) and the Master of Education Reading/Literacy Specialist Program (one of seven in the country) earned National Recognition by the International Literacy Association for outstanding preparation of literacy professionals. Institutions that earn ILA National Recognition demonstrated that their literacy professional preparation programs are exemplary and adhere to a rigorous set of standards. This recognition also confirms that teacher candidates are well prepared and ready to meet the challenges of today's classrooms.

Students Create SU 'Virtual Field Trip' for Special Education Students

As Wicomico County Public Schools continued its efforts to ensure student inclusiveness, Dr. Andrea Suk's Inclusive Instruction for Secondary Teachers class in SU's Seidel School of Education helped to ensure no student is left behind. When contacted with a request to create a guide geared toward high school students in special education and with disabilities who may want to know more about SU, Suk's students jumped at the opportunity.

They developed a “virtual field trip,” allowing those high school students to “see” campus with information about accommodations they may need, like opportunities through SU's Disability Resource Center and the accessibility of the campus shuttle. Those using the tool see a map of campus with informational videos on what being an SU student is like, from classroom design, to what a residence hall looks like, to recreational activities.



-Everything wood
is made from trees

Ride a
bike
Go to the
Carnival
Go
Swimming

STEM

Fairy Tales Problem Solving

The Three Little Pigs



Salisbury
UNIVERSITY
Respiratory
Therapy

COLLEGE OF HEALTH & HUMAN SERVICES

Respiratory Therapy Program Earns CoARC Honor

SU's Respiratory Therapy Program was recognized by the Commission on Accreditation for Respiratory Care (CoARC) with the Distinguished Registered Respiratory Therapist (RRT) Credentialing Success Award for the second consecutive year in 2022.

The award is presented as part of CoARC's continued efforts to value the RRT credential as a standard of professional achievement. From a program-effectiveness perspective, the CoARC views the RRT credential as a measure of a program's success in inspiring its graduates to achieve their highest educational and professional aspirations.

In selecting programs for this recognition, the CoARC used objective criteria based on key accreditation metrics documented in the 2021 Annual Report of Current Status (RCS). These programs were required to have three or more years of outcome data, hold accreditation without a progress report, document RRT credentialing success of 90% or above, and meet or exceed established CoARC thresholds for the Therapist Multiple-Choice Examination high cut score and retention.

MHEC Grant Helps Create Fast Track to B.S.N.

The School of Nursing continues its track record of success with multiple grant awards to support expanded undergraduate and graduate student enrollment, curriculum redesign to create a 12-month second degree Bachelor of Science in Nursing (B.S.N.) option (in addition to the current 16-month option), development of learning materials for undergraduate students and practicing nurses across the state, and expansion of the Faculty Academy and Mentorship Initiative from the Eastern Shore across the state.

A new five-year Maryland Higher Education Commission (MHEC) Nurse Support Program-II (NSP) grant, Fast Track to a B.S.N. Plus! (\$986,343), provides support to expand B.S.N. enrollment by 35% over the next five years through development of a 12-month second B.S.N. curriculum and expanded use of simulations, both manikin-based and using standardized patient actors.

BHIPP Program Celebrates 10 Year Johns Hopkins University Partnership

In 2022, SU, Johns Hopkins University and the University of Maryland Hospital Center celebrated 10 successful years of the BHIPP (Behavioral Health in Pediatric Primary Care) Program. The BHIPP Program is a partnership between SU's Center for Healthy Communities, University of Maryland's School of Medicine and Johns Hopkins University's Bloomberg School of Public Health. BHIPP places graduate-level social work interns in pediatric primary care settings. The program provides children with behavioral and developmental concerns much needed services and the ability to be treated in a familiar and safe environment.

With the help of a second grant awarded to the Center for Healthy Communities, SU is expanding the BHIPP Program to both western and southern Maryland to support pediatric primary care providers in those areas. Since 2012, SU's BHIPP Master of Social Work Interns have provided nearly 9,000 contacts with pediatric patients in the pediatric primary care co-locations.

CLARKE HONORS COLLEGE

Ciattei Named SU's First Rhodes Scholar Finalist

SU senior Christian Ciattei was named a finalist for the prestigious Rhodes Scholarship. Ciattei was among 235 applicants from 76 colleges and universities who reached the final interview stage of the competition. SU was among 12 institutions represented that had never before had a student win a Rhodes Scholarship.

Ciattei successfully submitted and won multiple national and internationally acclaimed grants, including a National Collegiate Honors Council Portz Interdisciplinary Fellowship, Barry Goldwater and DAAD Rise scholarships. He is a geography major from Perry Hall, MD, and a member of SU's men's track and field team. More than 2,300 students began the application process to become a Rhodes Scholar; 826 were endorsed by 247 different colleges and universities.

SU's MacDougall Presents at Posters on the Hill

Senior biology and psychology major Madison MacDougall, of Salisbury, presented her academic research at the 26th annual Posters on the Hill event, hosted by the Council on Undergraduate Research in Washington, DC.

The event provides students with an opportunity to share research with members of Congress and their staffers. MacDougall's submission, "The Effects of Lavendustin-A on Peripheral Nerve Degeneration in Hyperglycemic Zebrafish," was one of only 60 selected for presentation. She also met with the offices of U.S. Senators Ben Cardin and Chris Van Hollen and Congressman Steny Hoyer to discuss the benefits of, and advocate for, policies that increase funding and opportunities for undergraduate research.

'The Saunterer' Newsletter Named Best Honors Newsletter in the Country

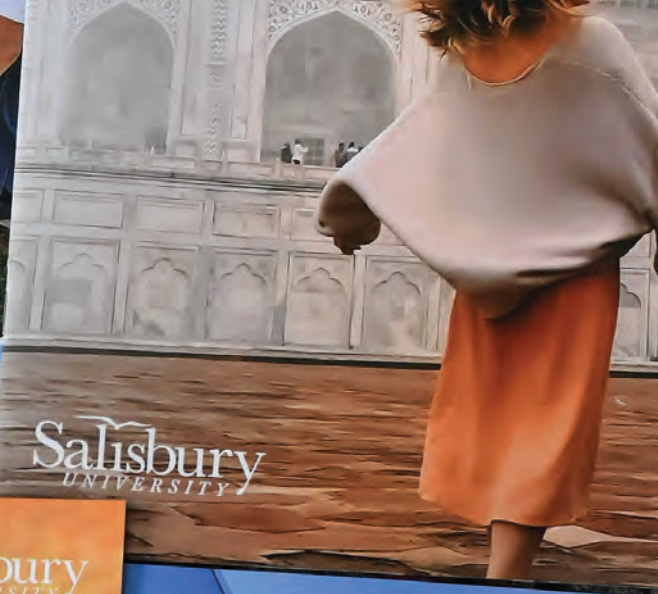
For the third time, the National Collegiate Honors Council named *The Saunterer*, the student-created magazine of SU's Glenda Chatham and Robert G. Clarke Honors College, the No. 1 honors print newsletter in the U.S.

Success begot success as Emily Ball, the student editor from the publication's previous victory in 2019, mentored the 2021-22 winning editor, Olivia Ballmann.

"To learn the entire editing and production process from Emily allowed me to witness her leadership and creativity," said Ballmann. "While hers were big shoes to fill, we bonded over our love for the Clarke Honors College and the publication. Emily was a great role-model and provided a confidence boost when needed. I'm so glad my team and I were able to make something special of our own and bring home first place again."

Features in the fall 2021 and spring 2022 issues included student, faculty and program profiles, as well as student creative works such as photos and poems.





HONORS
in
CLARKE HONORS COLLEGE · FALL 2022
Saunterer



FIRST PLACE
**National Collegiate
Honors Council**
NEWSLETTER CONTEST
Student Print
2022
Salisbury University
Saunterer



CLARKE HONORS COLLEGE · SPRING 2022
Saunterer
Salisbury
UNIVERSITY

CLARKE HONORS COLLEGE
Saunterer



GRADUATE STUDIES & RESEARCH

Grad Project Leads to Black History Walking Tour

SU graduate history student Allison Stancil, a digital humanities intern for SU's Edward H. Nabb Research Center for Delmarva History and Culture, made it easier to trace the footsteps of the past with a walking tour highlighting Salisbury's Black history. The tour is available free online at <https://theclio.com/tour/2090/1> and can be downloaded for use on the walk without cell service.

While many of the buildings, homes and businesses that once were integral to the Black community are no longer standing, Stancil's tour takes participants to key areas and to important neighborhoods such as Georgetown, Cuba, California and Jersey. Stancil, who grew up in Pocomoke City, MD, and has driven these streets hundreds of times, said she didn't know much about these areas before taking on the project. She believes many others may have similarly limited knowledge. The tour takes a real look at Black history of Salisbury, including the tragedies of lynching, segregation and "urban renewal."

NSF Awards SU's Freeman \$480K for Flying Squirrel Research

The National Science Foundation (NSF) is helping a SU biological sciences professor expand research and student education in the intriguing bonds between flying squirrels. Dr. Angela Freeman received a three-year, \$480,233 NSF grant to continue their independent research, "Neuroendocrinology of Flying Squirrel Social Behavior." The funding will support student assistant compensation, construction and placement of local aviaries, food and housing for the squirrels, and lab equipment.

"I had this question about flying squirrels, who display somewhat rare behavior compared to other mammals, in choosing to connect and nest together with unrelated peers throughout the year, independent of outside factors such as temperature and season," said Freeman. "I wanted to explore the hormones in their brain to better understand their shifting social and bonding behavior."

Freeman's research employs a three-part approach that will explain what behaviors are modulated during nonapeptide action, during which endogenous release occurs during co-nesting, and how sensitivity to these peptides differ between seasons. The team will determine how oxytocin, a hormone important for bonding and trust, affects communal nesting behavior in squirrels by administering the naturally occurring neuropeptide oxytocin or blocking its effects. They will also explore which parts of the brain are active during communal nesting and whether these brain regions produce oxytocin.

Wight Contributes \$40,000 to Dorothy Ruxton Chemistry Student Research Fund

Former SU President Charles Wight has always been a teacher and researcher at heart. A professor of chemistry and an expert in chemical explosions, Dr. Wight dedicated decades of his academic career to teaching, research and administration at universities in Utah, before being named SU's ninth president in 2018. The author or co-author of more than 170 academic papers, his own research interests have focused on physical chemistry, the chemistry of explosives and propellants, and the kinetics of solid state reactions and thermal analysis. Since arriving at SU, he has taught a general chemistry course every fall semester – and continues to do so even after retiring from the presidency in July 2022.

Wight and his wife, Victoria Rasmussen, have provided generous philanthropic support for SU and its students, most notably creating a research fund for chemistry students. Established in 2021, with gifts totaling \$40,000, the Dorothy Ruxton Chemistry Student Research Fund provides travel grants and professional development resources to allow SU chemistry students to present their research at conferences and network with established scientists in the field. The fund is named in memory of Wight's mother, who died in 2019.

INTERNATIONAL EDUCATION

Study Abroad Returns to SU

After nearly two years of interruption to global student mobility due to the COVID-19 pandemic, study abroad began the road to recovery at Salisbury University in 2022. During the spring term, students studied abroad in eight countries on five continents. Environmental studies major Gabe Dunn (Class of '23) studied glaciers in Chile with the School for Field Studies. International business and Spanish double major Monica Bailey (Class of '23) was one of six SU students to study on exchange at SU's long-term partner in southern Spain at the University of Málaga. During summer term 2022, the Perdue School of Business piloted a new model of study abroad program, the "SU In" campus of our long-term partner in Scotland, Stirling University. Twenty-two students earned credits taught by Perdue School professors Drs. Patrick Fennel and Aaron Johnson and earned additional credits for a second course taught by a Stirling University professor. Dr. Andrew Martino, Clarke Honors College dean, also led the first honors Global Seminar Tour in Sicily, Italy, during summer term.

New African Partnership Starts Strong

SU initiated its first university partnership in Africa with the University of Cape Coast in Cape Coast, Ghana. SU welcomed a delegation to Salisbury led by the president of the University of Cape Coast, Professor Johnson Nyarko Boampong, in the spring. The delegation discussed future plans to develop educational programming connecting the sites of memory of the Trans-Atlantic slave trade on the Ghanaian coast to sites of memory of the freedom and resistance movement along the Harriet Tubman Underground Railroad Byway.

SU sent its first undergraduate student to study abroad at the University of Cape Coast, Kevin Ladd (Class of '22), who studied courses for his minor in African area studies. During early summer 2022, Dr. Tina Reid, SU professor of nursing, traveled to the

University of Cape Coast as a Fulbright Specialist with the U.S. Department of State to collaborate with the School of Nursing and Midwifery on the development of their curriculum. SU applied for and was awarded only its third Fulbright Scholar-in-Residence in the history of the University: Dr. Christian Boso from the School of Nursing and Midwifery is in residence at SU funded by the U.S. Department of State throughout academic year 2022-23. More activities are planned for 2023 as the new partnership takes shape.

SU Keeps China Initiatives Going Online

The pandemic deeply interrupted travel into and out of China. Throughout 2022, SU kept educational activities moving forward with the State of Maryland's Sister State in China, Anhui Province. SU's Janet Dudley-Eshbach Center for International Education organized a one-year online curriculum in collaboration with the Henson School of Science and Technology and the Fulton School of Liberal Arts to allow the scheduled cohort of 22 dual-degree students from Anqing Normal University to complete their B.A. in interdisciplinary studies at SU all online from fall 2021-spring 2022.

During the academic year, the English Language Institute (ELI) taught more than 400 students from Anqing Normal University and Hefei Early Childhood Education College, both from Anhui Province, in online sections of English courses for non-native speakers. The ELI collaborated with SU's Department of Modern Languages and Intercultural Studies to add several sections of online Oral French for Foreigners to 90 more students. In January, the secretary of the Maryland Higher Education Commission and the party secretary of Anhui Provincial Department of Education signed a new Framework Agreement on Strategic Cooperation between the two groups.





WE ARE SU

THE CAMPAIGN FOR SALISBURY UNIVERSITY



SU Foundation Tops \$75 Million Goal for “We Are SU” Campaign

Following three years of the public phase of friend-raising and fundraising, SU and the Salisbury University Foundation, Inc., surpassed the ambitious \$75 million goal for “We Are SU: The Campaign for Salisbury University,” the largest such initiative in campus history. In all, the campaign raised more than \$75.3 million.

While previous campaigns focused on infrastructure updates and improvements, “We Are SU” was dedicated to growing the University’s endowment through scholarships and program support, directly benefiting students, faculty and staff – the people of SU. During the campaign, the SU Foundation’s endowment topped an all-time high of more than \$115 million in assets.

SU FOUNDATION



\$3.3 Million Gift Announced for SU Scholarships

A proud 1960 graduate of the Georgia Institute of Technology (Georgia Tech), George E. Miles understood the value of higher education. Now, his legacy will live on through students on the Lower Eastern Shore thanks to recent gifts from his estate to local colleges and universities, including approximately \$3.3 million each for Salisbury University and the University of Maryland Eastern Shore, and \$2.32 million for Wor Wic Community College. Each gift will benefit students through scholarships and financial aid.

Born and raised in Memphis, TN, Miles spent most of his adult life in the Salisbury area. After earning his B.S. in electrical engineering, he landed a job at NASA's Wallops Flight Facility on the Eastern Shore of Virginia. There, he worked on projects including sounding rockets. He passed away at his home in 2018.

SU Foundation Supports Students With Record \$1.3 Million in Scholarships

An SU education has become even more affordable for many students thanks to a record \$1.3 million in scholarship funding from the Salisbury University Foundation, Inc.

Established in 1973 to accumulate funds by gift and investment to enhance SU, the Foundation saw its assets exceed \$100 million for the first time during the 2021-22 fiscal year. This, combined with an increase in donor giving, including the creation of new scholarships for the upcoming academic year, helped fund the record-setting total. These efforts were a direct result of "We Are SU: The Campaign for Salisbury University."

"The mission of the SU Foundation is to support the University and its students," said Jason Curtin, vice president of University advancement and external affairs, and the Foundation's executive director. "These scholarships will make an SU education possible for some who otherwise may not have been able to afford college. For others, it will lessen their financial burden during their time at SU and after graduation, giving them an advantage over their peers."

ALUMNI



Campbell '16 Competes at Tokyo Olympics

When SU alumnus Luke Campbell '16 qualified for Team Germany at the 2021 Tokyo Olympics, he continued his track and field career that saw him become the most awarded student-athlete in Division III history as a Sea Gull, with 11 national championships. The 16-time All-American ran a personal-best time of 48.62 seconds in the semifinal round of the men's 400-meter hurdles. He also represented Team Germany in the 4x400-meter relay. Campbell is one of just 13 Division III track and field athletes – and the first from SU – to compete at the Summer Olympics.

Workman's '21 Design Selected to Travel to International Space Station

When SU alumna Kennedy Workman '21 interviews for jobs throughout her graphic design career, she will have a line on her résumé that will set her apart from others: A piece of Workman's work will have traveled into space. Her mission patch design was chosen as the winner of a competition for Terps in Space, an extension of the University of Maryland College Park (UMCP)-based Student Spaceflight Experiments Program, which allows students in the University System of Maryland to design science experiments to potentially be sent to the International Space Station. Mission 16, for which Workman designed her patch for a class assignment during her senior year at SU, was developed by a collaboration of students from UMCP and the University of Maryland, Baltimore County.



Copeland '20 Finishes in American Idol Top 7

Whether singing during the inauguration of SU President Charles Wight, starring in popular musical productions like *Hairspray* or placing first at the National Association of Teachers of Singing (NATS) national competition, Jeremiah "Jay" Copeland '20 made his mark on campus as an SU student. In 2022, he shared his talent with the world as a featured contestant on the 20th season of Fox Television's *American Idol*. He already has one famous fan: In promotional materials, multiple Grammy winner and *Idol* judge Katy Perry called the Salisbury native a "superstar." He finished as one of the top seven contestants in the competition and has since released his first single. Jay has credited SU's John Wesley Wright and his colleagues in the Music Program as terrific mentors.

Photo Credit: ABC/Raymond Liu

ATHLETICS

TEAMS AT A GLANCE

Fall Sports Record Highlight

Men's Cross Country		C2C Third Place
Women's Cross Country		C2C Third Place
Field Hockey	12-8	NCAA Second Round, C2C Champions
Football	8-2	NCAA First Round, NJAC Champions
Men's Soccer	7-8-1	C2C Tournament
Women's Soccer	6-11-2	C2C Semifinals
Volleyball	16-10	C2C Finalists

Winter Sports Record Highlight

Men's Basketball	10-12	C2C Semifinals
Women's Basketball	20-7	NCAA First Round, C2C Semifinals
Men's Swimming	4-1	MET 8th Place

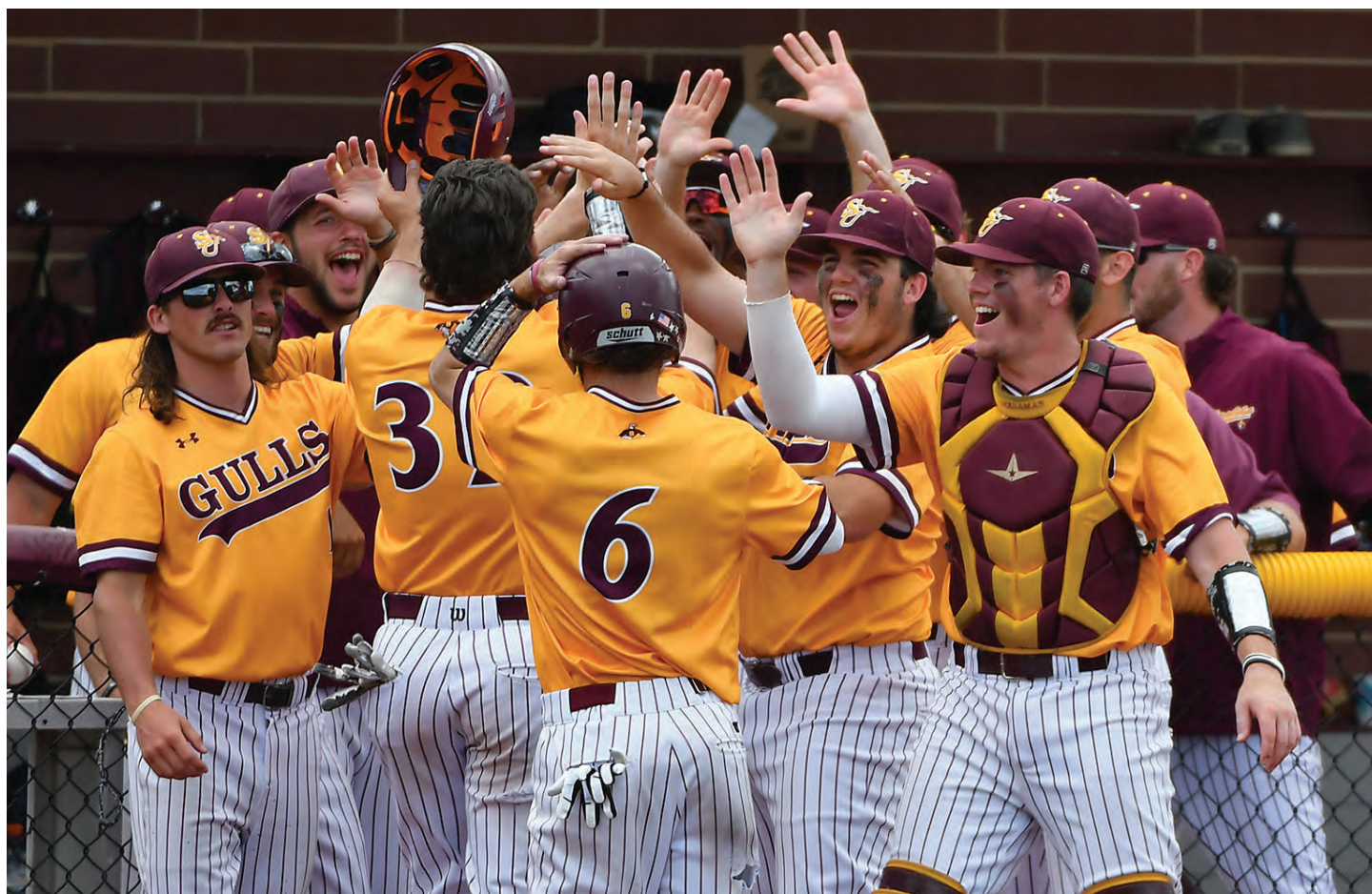
Women's Swimming	4-1	MET 7th Place
Men's Indoor Track & Field		C2C 2nd Place
Women's Indoor Track & Field		C2C 4th Place

Spring Sports Record Highlight

Baseball	39-12	NCAA Finalists; C2C Champion
Men's Lacrosse	20-2	NCAA Quarterfinals, C2C Champion
Women's Lacrosse	17-3	NCAA Quarterfinals, C2C Champion
Softball	42-8	NCAA 5th Place, C2C Finalists
Men's Tennis	8-12	C2C Semifinal
Women's Tennis	10-6	C2C Semifinal
Men's Outdoor Track & Field		C2C 2nd Place
Women's Outdoor Track & Field		C2C 4th Place

Baseball Finished as National Finalists

Salisbury University's baseball team reached its second consecutive NCAA College World Series Final in 2022. The team saw its quest to repeat as national champions fall just short in the finals. The Sea Gulls became the first team since Marietta in 2011 and 2012 to reach back-to-back Division III Championship Series.



**Cheerleading makes history
with third-place National Championship.**



**Softball captures fifth place at NCAA College World Series and finished
the year with 40-plus wins for the eighth time in program history.**



Men's Lacrosse repeats as C2C Championships and finished its 32nd consecutive national tournament with a quarterfinal round finish or better.



Women's Lacrosse repeats as C2C Champions and ended the season as NCAA Regional Finalists.



Football caps perfect conference season with its third consecutive NJAC Championship and its second straight NCAA Tournament berth.



Field Hockey continued the longest active NCAA Tournament streak to 27 consecutive seasons with its third straight conference crown.



Women's Basketball recorded the most wins in a season since 2014-15 and earned a bid to the NCAA Tournament.



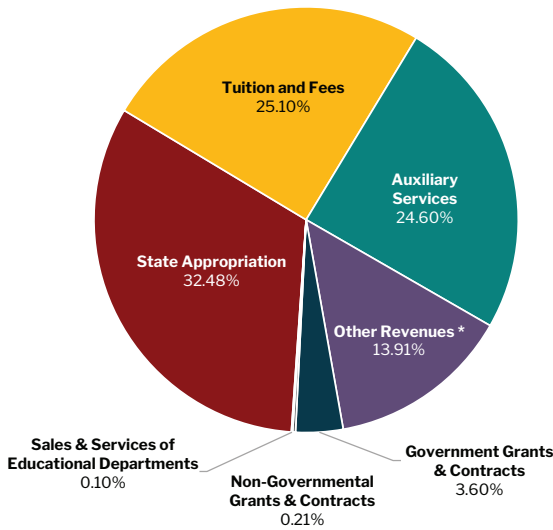
FINANCIAL REPORT

THE YEAR IN REVIEW

Like many universities, SU experienced an 8.3% enrollment decline in FY22. Since FY20, enrollment has declined 14.4%. The revenue decline associated with lower enrollment and historically lower densities in housing/dining was offset by the federal Higher Education Emergency Relief Fund (HEERF) and reductions in expenses associated with lower enrollment/campus densities.

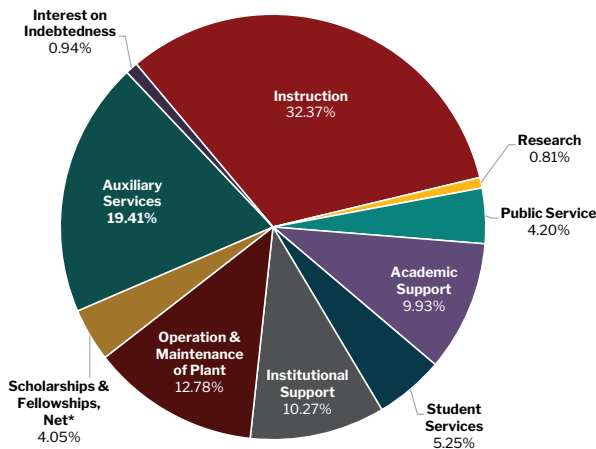
REVENUE DISTRIBUTION FISCAL YEAR 2022

Revenue By Source



EXPENDITURE SUMMARY FISCAL YEAR 2022

Total Expenditure by Program



UNIVERSITY FINANCIAL REPORT FISCAL YEAR 2022

Revenues	FY22
Tuition and Fees*	\$49,373,971
State Appropriation	\$63,903,645
Government Grants & Contracts	\$7,092,214
Non-Governmental Grants & Contracts	\$413,167
Sales & Services of Educational Departments	\$196,137
Other Revenues	\$27,363,105
Auxiliary Services	\$48,400,027
Total Revenues	\$196,742,266

Expenses

Education & General:	
Instruction	\$64,558,221
Research	\$1,605,667
Public Service	\$8,379,408
Academic Support	\$19,805,771
Student Services	\$10,476,144
Institutional Support	\$20,474,236
Operation & Maintenance of Plant	\$25,493,163
Scholarships & Fellowships, Net*	\$8,083,232
Auxiliary Services	\$38,712,207
Interest on Indebtedness	\$1,865,873
Total Expenses	\$199,453,922
.....	
Net Increase (Decrease) in Fund Balance	... \$(2,711,656)

* SU's gross scholarships and fellowships are \$29.9M.

The financial information displayed is based on the University's submission to the University System of Maryland and is published prior to the USM's or the external auditor's final review. Any subsequent changes that may have been requested and/or made are not reflected.





98%

Of those looking are employed within 1 year of graduation



13:1

Student-to-faculty ratio

22

Average undergraduate class size



64

47 Undergraduate Majors

15 Master's Programs

2 Doctoral Programs



\$350 M

Total in new facilities opened at SU in recent years



Make Tomorrow Yours

.....
Go to salisbury.edu



Salisbury University is a proud member of the University System of Maryland.

Salisbury University is an equal educational and employment opportunity institution.